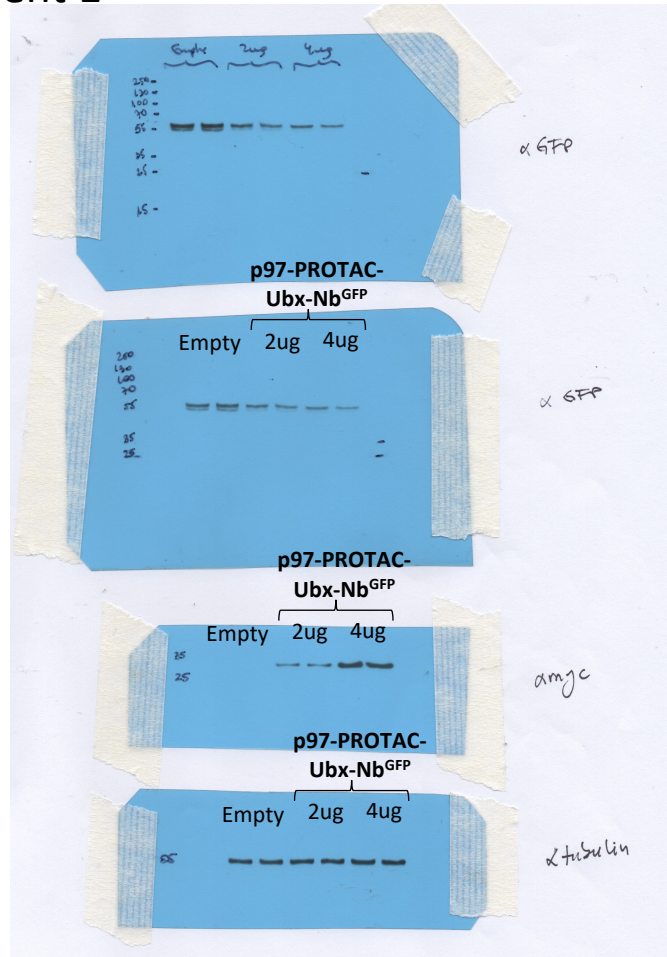


HeLa cells were co-transfected with **Q74-GFP (0.5 μ g DNA)** and either an **empty vector (C)** or the **p97-PROTAC-Ubx-Nb^{GFP} (U) construct (2 or 4 μ g DNA)**. Two independent experiments were performed, each conducted in duplicate using independent samples. In both experiments, 20 μ g of total protein from co-transfected cells were used. In the first experiment, the entire nitrocellulose membrane was initially incubated with **anti-GFP antibody to detect Q74-GFP**. The membrane was then stripped and cut to allow separate incubation with anti-tubulin and anti-Myc antibodies. In the second experiment, the membrane was cut prior to incubation: one portion was incubated with anti-vinculin and the other with anti-GFP..

Experiment 1



Experiment 2

